

# Newslink



**7<sup>th</sup> Annual 5 KM Walk/Run for  
CREATE A SMILE  
in partnership with  
Community Living St. Marys & Area**

**Create A Smile 5 Km  
Walk/Run**  
Date: Sunday  
September 26<sup>th</sup>, 2010  
Start time: 2pm

**Location:**  
**Milt Dunnell Pavilion  
at "The Flats"**

How do we say farewell to Marilyn?



How to reach our office:  
519-284-1400 ext.

- Marg McLean 225
- Nancy M. 221
- Vickie L. 241
- Tina R. 245
- Jennifer L. 228
- Kim M. 222
- Marg A 242
- Brenda K. 224
- Linda M. 243
- Laura C. 232
- Angie G. 234
- Don D. 223

**Employee Relations  
Committee**

- Ruth L. 284-2388
- Michelle R. 284-0543
- Tamie C. 284-0930



A faithful friend and supporter for over 30 years, Marilyn retired in early July from her most recent position with Community Living St. Marys and Area. Working in the sheltered workshop was her first job with the association. Through the years, she worked in many different capacities and when she wasn't working for the association, she was volunteering. Marilyn says that she found the best fit as "Community Resource Coordinator".

Meeting people, getting to know them well, matching folks, and putting together the pieces of the puzzle

made Marilyn delirious with excitement. She loves watching sparks fly... in a positive way!

We miss her laugh, her enthusiasm for life, her interest in everything, her courage, spontaneity, and her sincere belief in our community as a welcoming place for all.

After some time at the cottage, with her mate and her kids and grandkids, I'm sure we'll be honoured to have Marilyn working again...at least a little bit!



Susannah Joyce and Joan Lang ,  
old friends and former colleagues.

## Central Administration

**Canada Savings Bonds:** It's that time of year again! The Canada Savings Bonds deduction program is offered through the payroll. Applications will be available at the Central Admin Office late September if you are interested in participating. For those employees who are currently participating this is the time to make changes to the amount you are contributing by filling out a change form. Application/change forms need to be returned to Central Admin by **October 18<sup>th</sup>** in order to meet the Bank of Canada deadline.

**Part Time Vacation:** Vacation pay for part time employees will be paid out on the last pay date of **November (17<sup>th</sup>)**. This is a mandatory pay out. As a reminder, part time employees can request vacation pay at any time through their team leader(s).

**Matching RRSP Benefits:** Every year **December 15<sup>th</sup>** is the date to notify Central Admin by **a)** if you wish to remove yourself from the matching benefit; **b)** if you previously did not meet the earning requirement and are interested in participating, check with Central Admin to see if you 2009 earnings do met the requirement ( gross earnings greater than \$10,000) **c)** if you opted not to participate when you were eligible and would like to, check with Central Admin to see if you have continued to meet the eli-

gibility criteria **d)** if you wish to change the percentage you are currently participating at. Eligibility requirements are also checked at this time for all participants. If you no longer meet the requirements, you will be notified. All changes will be implemented pay period ending **January 07, 2011**. \*\* Effective December, 2009 employees now have the option of participating at 1%, 2% or 3% matching.

**Reminder:** Due to the privacy laws and to protect the employee's information, the Central Admin Office does not give out phone numbers (including cell) or addresses to anyone. If you are aware that your place of employment may be contacted for release and/or confirmation of personal information – you are required to fill out a "Consent to Share Information" form which you can either pick up at the Central Admin office or download from our website – [www.communitylivingstmarys.ca](http://www.communitylivingstmarys.ca) (click on downloads). You can request a letter from Central Admin with the relevant information but a "Consent to Share Information" form is still required.



Al Slater & Sue Minns



Our AGM was held on June 21st. and was quite a success mostly due to the uplifting and humorous presentation given by Sue Minns. Sue lives her life with humour and red high heels. She is a very sought after motivational speaker and we enjoyed every

minute of it.

**Quote "The way I see it, if you have to spend your days in a wheelchair you can either whine about it or your can seize the opportunity to wear smokin' red high heels with zero discomfort."**

### Core Gifts

Do you know what your core gift is? Would you like an interview to find out?

A person's core gift can be discovered through an interview process and we are happy to help you learn more about your own core gift.

If you would like an interview please contact Jennifer Leslie or

Community Living St. Marys and Area presents:  
**David Pitonyak**

Dave has provided consultation and training for individuals, families, and professionals throughout the United States, Canada, Puerto Rico, England and Ireland.

Part of David's practice involves supporting people with difficult behaviors and supporting the needs of person's friends, family, and caregivers.

"Behaviors are 'messages' which can tell us important things about [a person's life]. Learning to listen to an individual's difficult behaviour is the first step in helping the individual to find a new and healthier story" ~ Dave Pitonyak

For registration information, contact:

Tina at (519) 284-1400 x 245 or [tritu@execulink.com](mailto:tritu@execulink.com)



Community Living St. Marys and Area presents:  
**David Pitonyak**

St. Marys Golf and Country Club  
October 14th & 15th, 2010

**Day 1: 9:00am—4:00pm**

Beyond "Behaviours": Supporting Competence, Confidence, and Well-being

**Day 2: 9:00am—4:00pm**

Toolbox for Change:

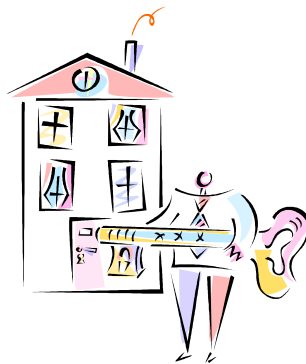
Reclaiming Joy, Purpose and Commitment in the helping profession

**Compass Training**  
September 28 & 29,  
2010  
9am – 3pm at JPC  
Please see your team  
leader

**We celebrate Marion Struss  
and Investors Group!**

For many years, Marion has made significant personal financial donations to our association.

And through Investors Group Matching Gift Program her contributions were matched dollar for dollar. Their generosity is greatly appreciated! Thank you Marion!



**Are you interested in investing in your  
community and getting a fair return for  
your investment?**

Housing is expensive and home ownership is just a dream for many people with disabilities. However, home ownership is a reality for a few people connected with our association. If you are interested in learning more about investing in affordable housing and turning dreams into reality... please call Marg McLean.

300 Elgin Street East  
PO Box 1618  
St. Marys, Ontario  
N4X 1B9

Phone - 519-284-1400  
Fax - 519-284-3120



Providing support to people with  
a developmental disability

[www.communityliving  
stmarys.ca](http://www.communitylivingstmarys.ca)

We gathered on August 30<sup>th</sup> at the James Purdue Centre for our traditional 'pizza' lunch honouring our summer students for their good work and commitment.

Abbey, Becky, Seth and Lauren had a big impact and we recognize and celebrate their contributions. We extend our best wishes as they continue their education.



### **Personal Planning Network...creating positive futures in Perth**

Independent planning and facilitation in Perth has launched! It is with great pleasure that we announce this very exciting new support for people with disabilities and their families in Perth County. Lead Facilitator Charlotte Dingwall is busy working with the steering committee, Perth groups and the Ministry of Community and Social Services to be available for people in Perth communities early this fall.

For more information, email [planningnetwork@quadro.net](mailto:planningnetwork@quadro.net) .

### **Making Employment a Reality!**

As part of her Conestoga College Employment Counselling program, Janice Blewett has recently completed a 200 hour unpaid practicum with Community Living.

Janice researched local employment resources, met with young people interested in employment and their families, learned more about issues affecting people with disabilities and employment, discussed issues and possibilities with local schools and employers, developed some excellent resources for the association, and much more. She developed a good appreciation for Partners in Employment and LEADS, both employment agencies in our community.

Since Janice has been working with a number of

young people, she will continue to help them move forward in their employment ambitions on a part-time basis. Her areas of focus will include: employment facilitation, job development and linking with young people.

Janice believes "customized competitive employment is for people with disabilities."

