



Newslink

Create a Smile

November 2009

- How to reach us :**
Call
519-284-1400
and the
extension:
- Marg McLean x 225**
 - Nancy Marriott x 221**
 - Vickie Logan x 241**
 - Tina Ritu x 245**
 - Jennifer Leslie x 228**
 - Kim Monden x 222**
 - Jan Gerrie x 223**
 - Marilyn Haywood x 227**
 - Caroline Simons x 226**
 - Marg Angus x 242**
 - Brenda Kaiser x 224**
 - Linda Munro x 243**
 - Jenn Costello x 232**
 - Angie Gallant x 234**

Smiles all around!
 With warm hearts and great expectations, some seventy people gathered on Sunday October 18th to participate in the 6th annual 'Create A Smile' Foundation 5km Walk. Again this year, the Foundation partnered with Community Living St.Marys and Area. "A community where everyone belongs", the vision of our association, is alive and well based on the festivities of this Sunday afternoon fundraising event.



The walk was a tremendous success with over \$14,000 raised! The generosity of our community, families, friends and sponsors, is overwhelming! Top fundraisers include Shelley Palmer and family, Tracey Aitcheson and the Holland family, along with Create A Smile founders, Tracy and Mirco Rossetti.

The money raised will be used to provide support to individuals not receiving any government funding, cover the costs of our summer students who provide support to young people during their school break, and will buy accessibility related items.

Words cannot adequately express our sincere gratitude to all the people that made this walk a success. A huge thank you is extended to all participants, sponsors and helpers.

Sincerely,
 Marg McLean



Ministry of Community and Social Services Southwest Region
 invites you to participate in a focus group....

The ministry is developing a new application process for adults with developmental disability. This will be happening across the province.

We need to hear from you if:

- You are receiving services and supports
- You are on a waiting list to receive services and supports
- You have a child who will require services and supports when he/she becomes an adult
- You provide services and supports to an individual with a developmental disability

For more information call Marg McLean at 519-284-1400 ext. 225. Please RSVP to Denise Dixon at DeniseDixon@ontario.ca or by calling 1-800-265-4197 ext.3227

November 19th, 2009 - 7pm to 9:30pm at Avon Maitland District School Board, 62 Chalk St. N., Seaforth

November 25, 2009 - 6:30pm to 9pm at Robarts School for the Deaf, 1090 Highbury Ave., London

Social Committee

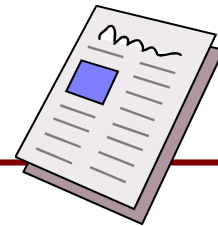
The Fall basket was drawn at our General Staff meeting in November. The lucky winner was Ed Blagdon.....Congrats. There will be a Christmas basket out at the end of November and it will be drawn at the Community Living Christmas Dinner & Dance on December 11, 2009 . Tickets are \$2 each or 3 for \$5. They will be on sale as of November 23, 2009.

We have some great things coming up in the new year so make sure you keep an eye out for Social Committee events. We would like to hold some events in the new year to add some

fun to our lives, so watch for flyers. If you have any ideas of things that you would like to see happen , make sure to contact a Committee member .

Don't forget about the 50/50 draw that is held each month. You can put in \$4 to play. Each month a name is drawn out. Everyone's name is in the pot. If you have played that month 1/2 the pot is yours!! So far the winning dollar amount for you to take home is over \$100. That is definitely worth playing for. The sign up sheet is up at JPC in the photocopy room.

If you have ideas or articles you would like to submit to the newsletter please contact Tracy Brant at
branttron@quadro.net



Employee Relations Committee

ERC held an election on Nov 4th to fill the two positions needed. The successful support works were Tamie Coward and Ruth Lamond.

Thanks goes out to Carol Ackersviller and Chris Bibby for their interest joining the committee. Our next EMRC meeting will be Nov. 25th. If you have any ques-

tions or concerns that you would like discussed, please contact one of your ERC members.

Your ERC members would like to hear your input.

Tamie Coward 519-284-0930

Ruth Lamond 519-284-2388

Michele Rourke 519-284-0543

COMPASS TRAINING ~ Finding our way



On Wednesday Oct 21 and Oct 28, several people attended our first Compass Training session. This training session is a mandatory

session put on by Facilitation and Support Services.

The training included "Finding the true north with Facilitation and Planning", med training, and "Orienteering with Support Services"

Everyone will be asked to complete both days of Compass training within the next two years. The next session will take place early in 2010.

Please speak to your Team Leader about attending the session.

Info from Central Admin.

2% Matching RRSP Benefits: Every year December 15th is the date to notify Central Admin by a) if you wish to remove yourself from the matching benefit b) if you previously did not meet the earning requirement and are interested in participating, check with Central Admin to see if your 2008 earnings do meet the requirement (earnings greater than \$10,000) c) if you opted not to participate when you were eligible and would like to, check with Central Admin to see if you have continued to meet the eligibility criteria. Eligibility

requirements are also checked at this time for all participants. If you no longer meet the requirements, you will be notified. All changes will be implemented pay period ending January 08, 2010

Reminder: Due to privacy laws and to protect the employee's information, Central Admin does not give out phone numbers (including cell#'s) or addresses. If you are aware that your place of employment may be contacted for release and/or confirmation of personal information – you are required to fill out a “Consent to

Share Information” form which is available from the Central Admin office. You can request a letter with the relevant information from Central Admin but a “Consent to Share Information” form is still required.

Over the Christmas season Central Admin will be closed December 25th - 28th and January 1st.

Merry Christmas!

Community Living Christmas

Bob's niece, Ann Belyea has made a quilt and generously donated it to the Association. Tickets to win this quilt will be on sale from now until our Christmas dinner on December 11, 2009. Tickets are \$3 each or 2 for \$5.

The quilt is on display at JPC. You really must see it to appreciate how beautiful it is. Tickets are available now at JPC and the evening of the

dinner. The lucky winner will be announced at 7pm, December 11th.

Check your invitation that came with this newsletter for details of the evening, times etc. Make sure to contact Nancy to reserve your spot for the dinner.

Here is a picture of the quilt called “**Camp Wilderness**”.



Wards of the Crown - Andree Cazabon

The film, *Wards of the Crown* looks at the challenges facing teenagers who are about to experience freedom after a childhood spent as wards of the Crown. The film chronicles their pasts—during which they were repeatedly moved from one foster home to another. It is a story of teenagers caught between a past they would soon rather forget and a future they've long dreamed about but can't begin to imagine.

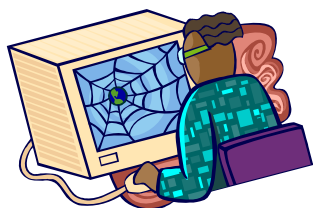
This film is being shown on Monday November 30th, 2009 in two locations and times:

- (1) From 10:30am to noon at the Huron County Health Unit, 77722B London Rd., Clinton (519-527-0111 x 110)
- (2) From 7pm to 9pm at Central Huron Secondary School, 165 Princess Street East, Clinton

Co-Sponsored by: Huron-Perth Community Planning Table and H-PCAS with funding from Student Support Leadership Initiative

**Community Living St.
Marys & Area**

Community Living St. Marys
and Area
300 Elgin Street East
PO Box 1618
St. Marys, Ontario
Phone: 519-284-1424
Fax: 519-284-3120



Make sure and check out our
website at

www.communitylivingstmarys.ca

Over \$14,000 raised...



Parents in Perth

"What is Person Directed Planning?"

Tuesday, November 24

6:00 p.m. to 9 p.m.

Howie Morenz Room (Mitchell Community Centre),

Mitchell Ontario

Guest Speaker

Al Hendry of

**Windsor-Essex Brokerage for Personal
Supports**

"Brokerage is built on the belief that individuals and families need good information and good advice to make good decisions, so people can use their gifts and skills to contribute as full citizens in their community according to their dreams and goals."
(<http://www.windsorsexbrokerage.com/>)

Please RSVP by Friday, November 20 to Teresa at 519-527-0202 or
hcf@tc.on.ca



Hard work pays off...

Thanks to all who worked hard to
make

"Create a Smile"

a success!!